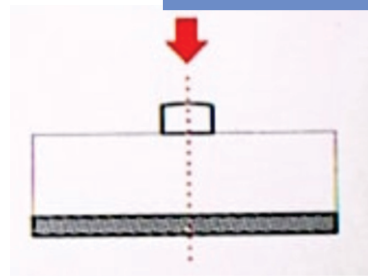
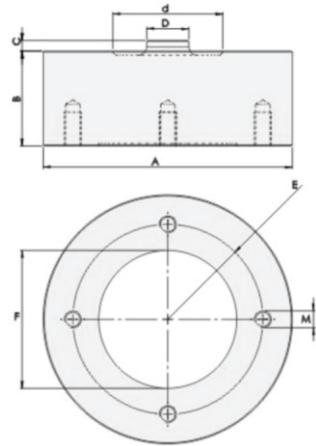
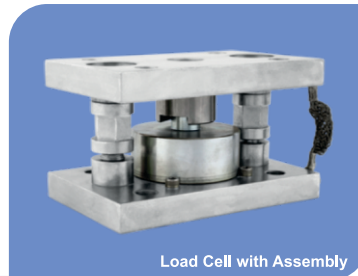
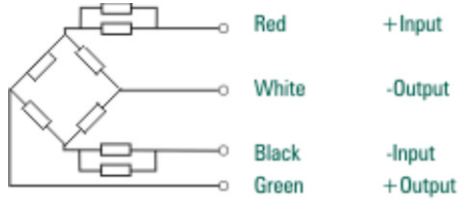


Button Type Load Cell

We present our model name SSLC 616 which is durable and long lasting. This model is perfectly suitable for industrial application. Depending on various industrial standards and the requirements of applications the models is designed. These products are made in accordance with various international standards to offer highly comfortable chairs to our valued clients.

Wiring Schematic Diagram



Features:

1. IP67
2. Low profile
3. Industrial motion weighing
4. Easy Installation
5. Explosion proof where the version is Ex ib || Ct4

Dimintions:

Capacity	A	B	C	D	d	F	E	M
100,200,500kg	50	25	5	13	32	34	42	M4*0.7
1T,2T,3T,5T	60	30	5	12	36	42.5	50	M6*1
10T, 20T	115	45	7	20	52	65.4	90	M8*1.25
30T, 50T	155	50	5	44	90	103	125	M12*1.75
100T	205	60	7.5	65	130	145	165	M16*2

Specifications :

Related Load (kg.) 100 kg to 100 Ton	
Precision C2	Insulation Resistance(M Ω) -
Composition Error ± 0.03	Excitation Voltage (V) 9 ~ 12 (DC/AC)
Rated Output (mv/v) 2.0 \pm 1%	Compensated temp. Range (°C) -10~+40
Non-Linearity (%FS) 0.03 / 0.017	Use Temp. Range (°C) -35~+60
Hysteresis (%FS) 0.03 / 0.02	Temp. Effect on Zero (%FS/10°C) 0.03 / 0.017
Repeatability (%FS) 0.01	Temp. Effect on Span (%FS/10°C) 0.0015
Creep (%FS/30min) 0.02	Safe Overload (%FS) 120
Zero Balance (%FS) ± 1.0	Ultimate Overload (%FS) 150
Input Resistance (Ω) 750 \pm 10	Defend Grade IP65
Output Resistance (Ω) 750 \pm 2	Cable 6mm, 5mtr

Applications:

1. Check weighers
2. Tank weighing
3. Hopper weighing
4. Special purpose machine



Specifications are subject to change for improvements without prior notice.