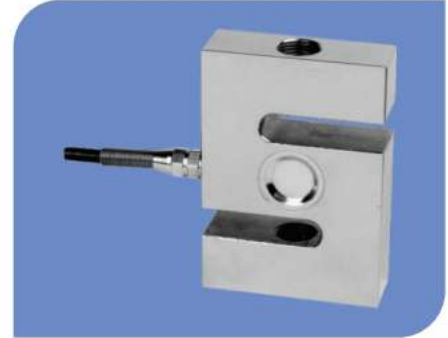
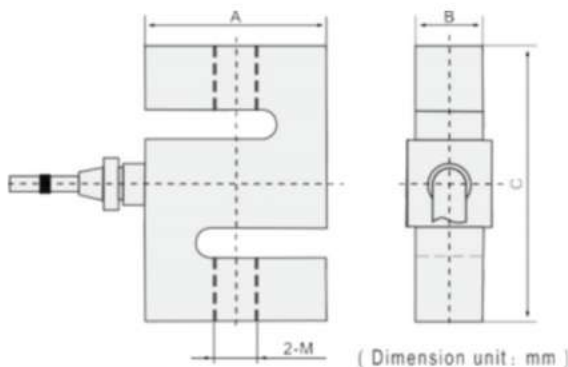
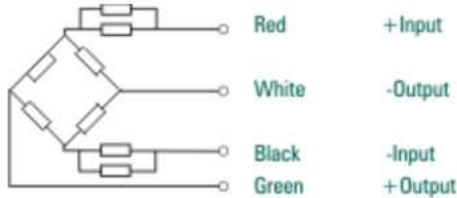


## S - Type Loadcell

We are senior player in this field and have vast experience Loadcell SSLC 301 model which moves us toward our company motive of maximum customer satisfaction with world class quality product. We are regularly researching and developing new models and designs of load cells which increase working life at low cost. This easy functioning product can be applied in both tension and compression. These products can be customized as capacity and other factors. We offer these in different capacities from 10 kg to 5,000kg. It used for various industrial applications such as hanging, tank level, hopper and truck scales.

### Wiring Schematic Diagram



### Dimensions:

CAPACITY	A	B	C	M
10~50kg	51	19	76	M12 x 1.75
100~500kg	51	19	76	M12 x 1.75
1000kg	50.8	25.4	76	M16 x 1.75
2000~5000kg	76.2	25.4	108	M18 x 1.50

### Specifications :

Rated Load (kg.) 10, 20, 50, 100, 200, 300, 500, 1T, 2T, 3T, 5T	
Precision C2	Insulation Resistance(M Ω) 5000
Composition Error ± 0.03	Excitation Voltage (V) 9~12 (DC/AC)
Rated Output (mv/v) 2.0±0.004 & 3.0±0.004	Compensated temp. Range (°C) -10~+40
Non-Linearity (%FS) -	Use Temp. Range (°C) -10~+55
Hysteresis (%FS) -	Temp. Effect on Zero (%FS/10°C) ± 0.023
Repeatability (%FS) -	Temp. Effect on Span (%FS/10°C) ± 0.017
Creep (%FS/30min) ± 0.024	Safe Overload (%FS) 120
Zero Balance (%FS) 1.0	Ultimate Overload (%FS) 150
Input Resistance (Ω) -	Defend Grade IP66
Output Resistance (Ω) 350 ± 2	Cable -

Specifications are subject to change for improvements without prior notice.

### Features:

1. Aluminium / Alloy steel construction
2. Glue sealing and welding to IP67 & Ip68
3. Easy to install and use for both tensile and compression application

### Applications:

1. Industrial Automation
2. Suitable for Hanging scale
3. Vibratory feeding equipment
4. Tension testing machine
5. Tank weighing, hopper weighing etc.

